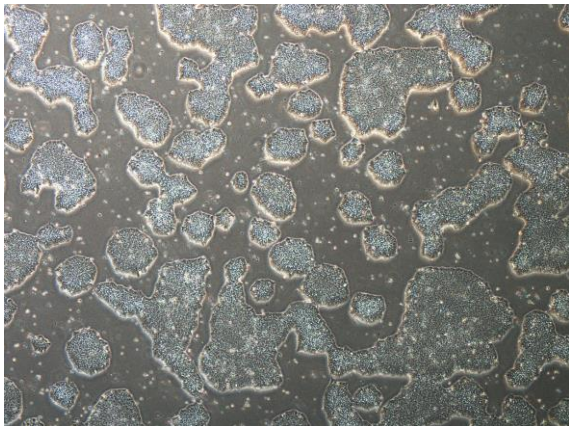
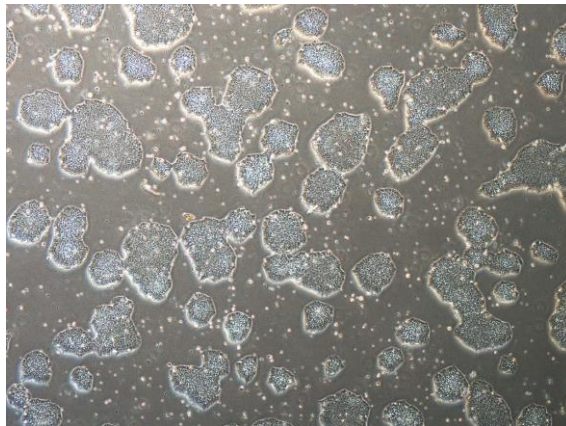


## 【 CiRA-j-1618 】 Morphology of iPSC colonies

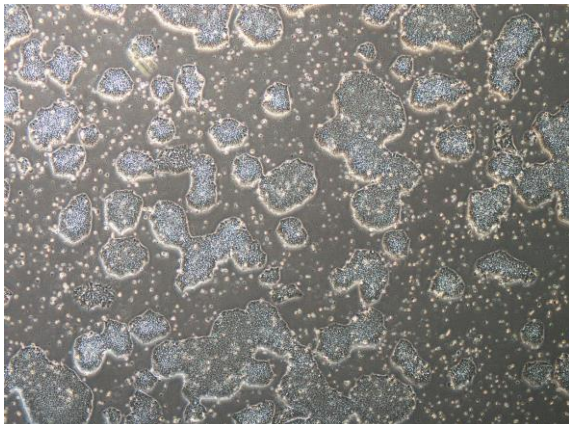
CiRA-j-1618-A: passage-3



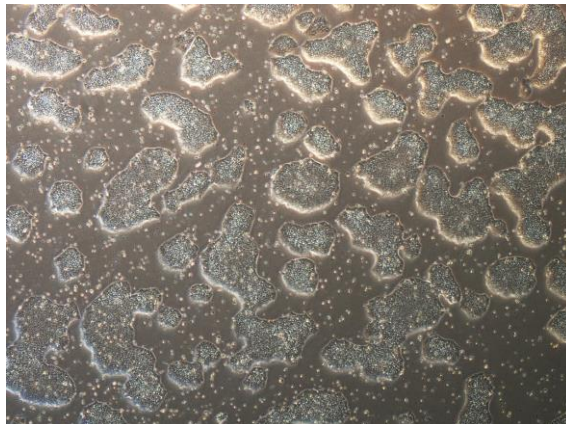
CiRA-j-1618-B: passage-3



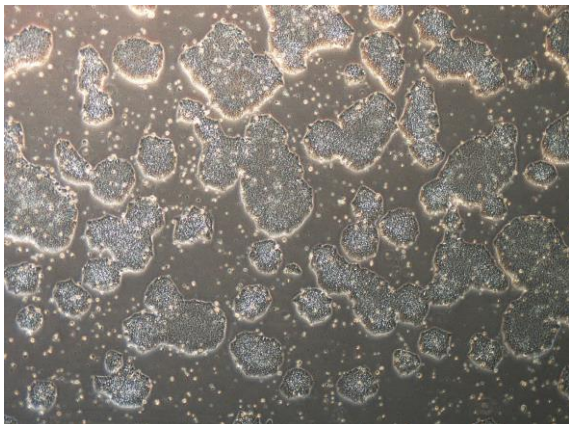
CiRA-j-1618-C: passage-3



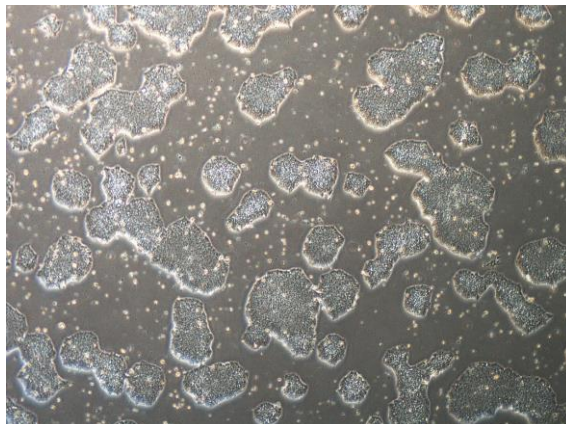
CiRA-j-1618-D: passage-3



CiRA-j-1618-E: passage-3



CiRA-j-1618-F: passage-3



( All images were captured at 4x magnification )